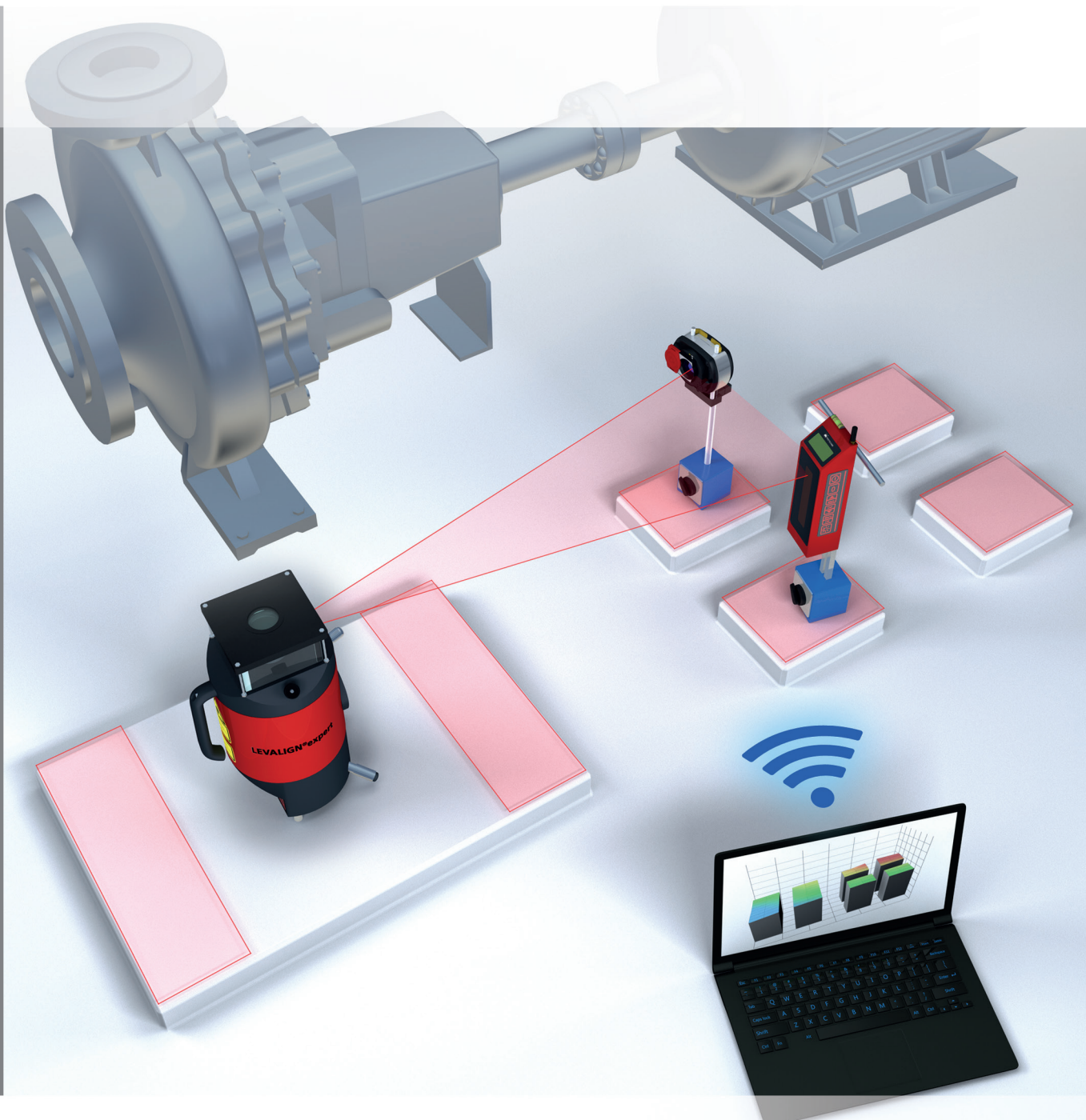


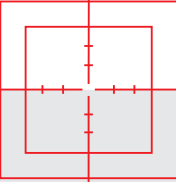
# GEO CENTER

Geometric measurement of machines and assets  
directly on your PC



# GEO CENTER

One software for a wide range of applications



## Straightness

- ▶ Straightness of rails and guides
- ▶ Straightness of machine foundations
- ▶ Positioning of rotating axes and bores
- ▶ Measurement of deflection on rams, actuators and extrusion presses

## Flatness

- ▶ Flatness of machine foundations
- ▶ Flatness of machine tool tables
- ▶ Flatness of circular and square flanges
- ▶ Comparison of machine half casings

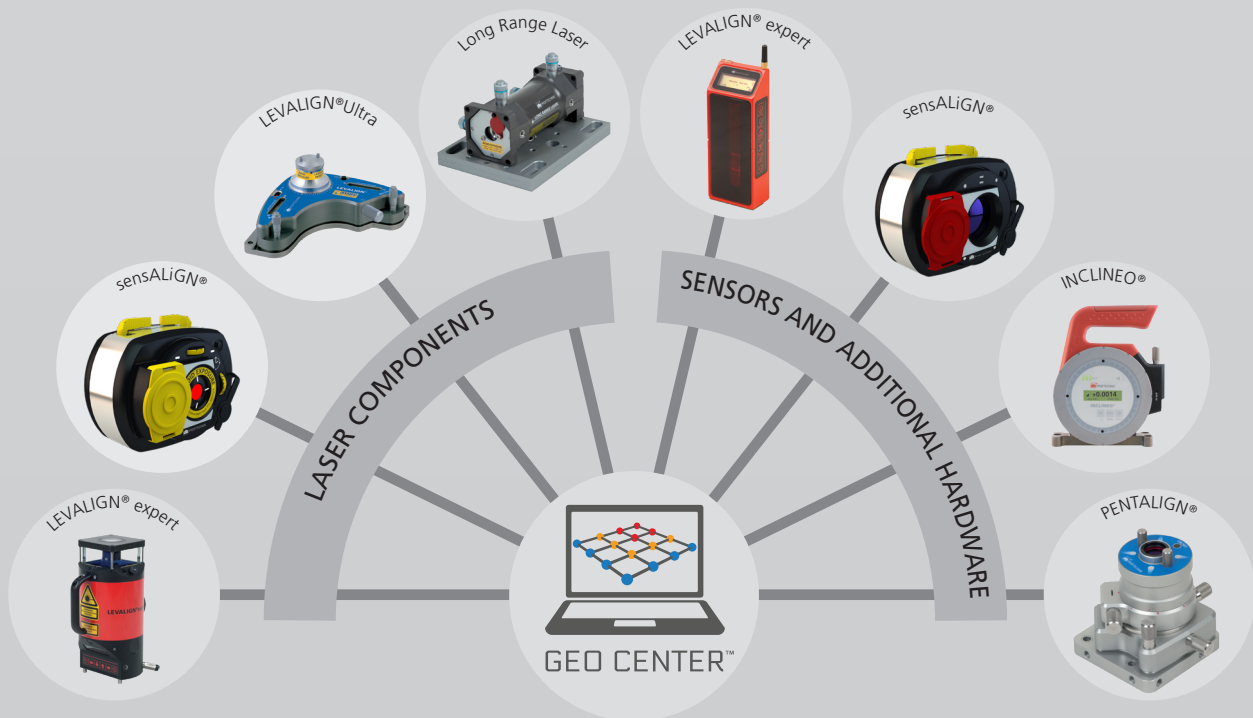
## Level, inclination, plumbness

- ▶ Level of machine foundations
- ▶ Level of machine half casings
- ▶ Measurements of surfaces with any inclination
- ▶ Measurement of inclination along edges and rails
- ▶ Plumbness of vertical shafts and surfaces

## Parallelism and right angle

- ▶ Parallelism of crane rails
- ▶ Parallelism of any two surfaces, e.g. flanges of a wind turbine, foundations of a motor-pump set or a ship's propeller lines
- ▶ Perpendicularity of machine components

Depending on the application, GEO CENTER can be combined with the following measurement components:



# GEO CENTER

One software, many possibilities

## Direct measurement on your PC

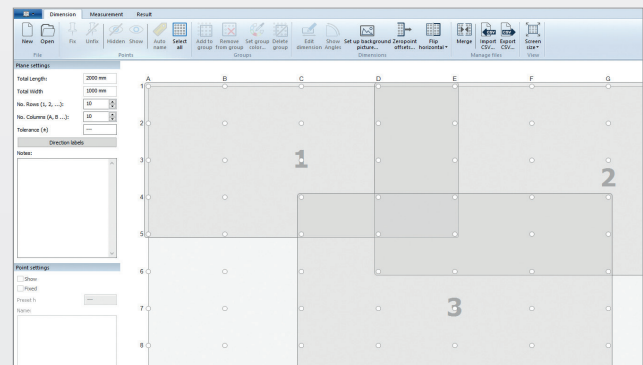
GEO CENTER is a newly developed software platform for the geometric measurement of machine foundations, components and assets. The software allows the user to carry out complete measurement tasks seamlessly from a central software application on their laptop.

Using GEO CENTER, users can prepare and carry out the measurement tasks, analyze the results and create reports directly on a Windows-based laptop.

The measurement data is transferred via Bluetooth® from our proven PRUFTECHNIK measurement sensors directly to the GEO CENTER software installed on the laptop. This means that a handheld computer is no longer needed to perform the measurement task. The software offers flexible connections and can be used with different PRUFTECHNIK laser and sensor components depending on the measurement application.

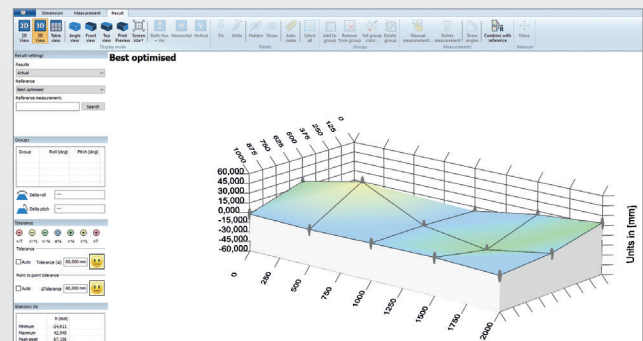
### Prepare measurement task

- ▶ Use standard or personalized measurement templates
- ▶ Create templates from existing measurement files
- ▶ Input a user-specific bracket offset for flexible definition of the measurement planes
- ▶ Take measurement points directly on the laptop or with a Bluetooth® remote control



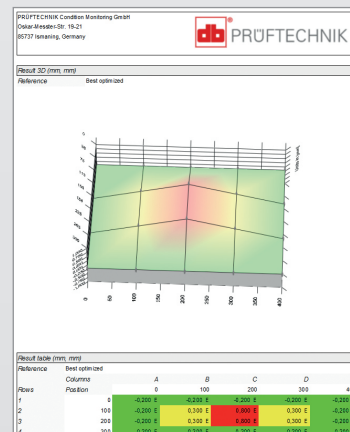
### Analyze measurement results

- ▶ Display measurement results in 2D or 3D
- ▶ Check measurement results for repeatability
- ▶ Input user-specific tolerances
- ▶ Simulate measurement results (manual input of readings)
- ▶ Edit measurement point subsequently



### Archive and report

- ▶ Customize measurement reports (company logo, content)
- ▶ Back up measurements, import and export measurement files (.csv)



# PRUFTECHNIK

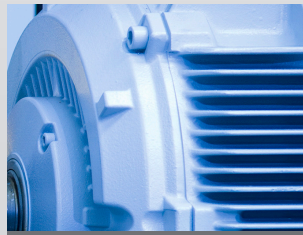
Proven technology for all industries

GEO CENTER system requirements	
Operating systems	Windows 7 (32/64 Bit), Windows 8 (32/64 Bit), Windows 8.1 (32/64 Bit) and Windows 10 Not supported: Windows 8 RT and Windows 8.1 RT
Screen resolution	1280 x 1024
CPU	Intel or AMD (x86 or x86-64)
RAM	Minimum 1 GB
Free disk space	Minimum 500 MB
Connections	USB, Bluetooth® or Wifi
Installation	Internet

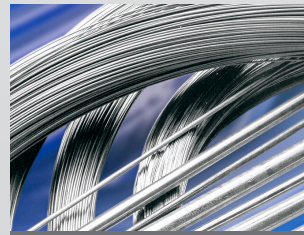
PRUFTECHNIK offers solutions in the following areas



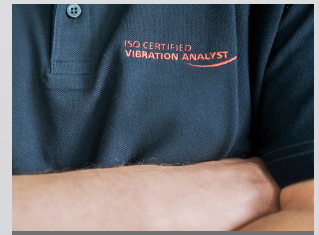
Alignment Systems



Condition Monitoring



Nondestructive Testing



Service & Support

# www.pruftechnik.com

LEVALIGN®, sensALIGN®, INCLINEO® and PENTALIGN® are registered trademarks of PRUFTECHNIK Dieter Busch AG. No copying or reproduction of this information, in any form whatsoever, may be undertaken without express written permission of PRUFTECHNIK Dieter Busch AG. The information contained in this leaflet is subject to change without further notice due to the PRUFTECHNIK policy of continuous product development. PRUFTECHNIK products are subject to patents granted or pending throughout the world.  
© Copyright 2017 by PRUFTECHNIK Dieter Busch AG.



PRUFTECHNIK Condition Monitoring GmbH  
Oskar-Messter-Str. 19-21  
85737 Ismaning, Germany  
Tel.: +49 89 99616-0  
Fax: +49 89 99616-200  
info@pruftechnik.com  
www.pruftechnik.com

A member of PRUFTECHNIK group